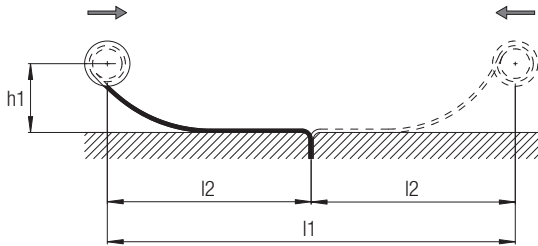
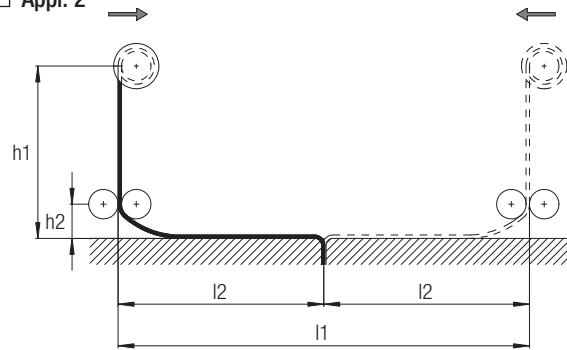


Application - Please mark -

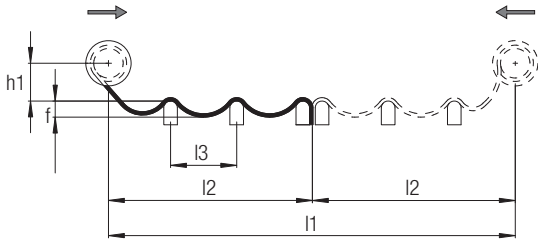
Appl. 1



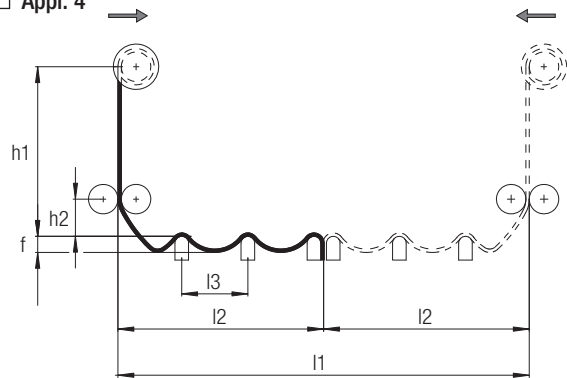
Appl. 2



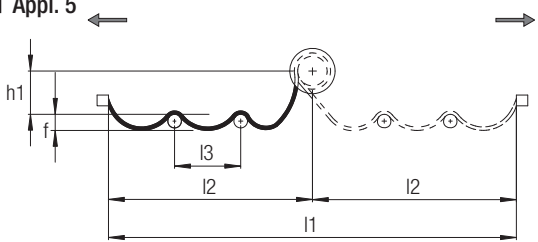
Appl. 3



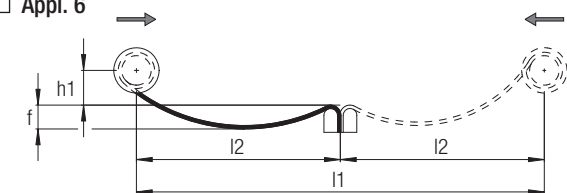
Appl. 4



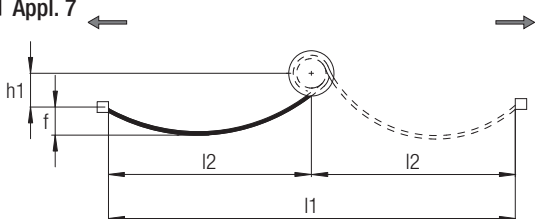
Appl. 5



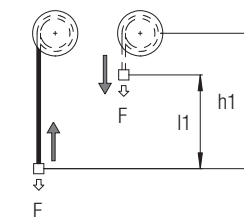
Appl. 6



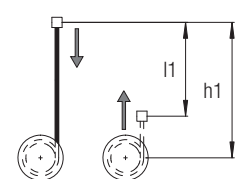
Appl. 7



Appl. 8



Appl. 9



Motorized Reels  
Program 7100

**Application Data**

- Speed \_\_\_\_\_ [m/min]
- Acceleration \_\_\_\_\_ [m/s<sup>2</sup>]
- Run-Up time \_\_\_\_\_ [s]
- Operating Voltage \_\_\_\_\_ [V]
- Frequency \_\_\_\_\_ [Hz]
- Feed-in  Center feed  End feed
- Travel length / Lift  $l_1$  \_\_\_\_\_ [m]
- Winding length  $l_2$  \_\_\_\_\_ [m]
- Distance between the applications  $l_3$  \_\_\_\_\_ [m]
- Mounting height of the cable reel  $h_1$  \_\_\_\_\_ [m]
- Mounting height of cable guide  $h_2$  \_\_\_\_\_ [m]
- Max. cable sag  $f$  \_\_\_\_\_ [m]

**Cable Data**

- Type \_\_\_\_\_
- Number of Cores x cross section \_\_\_\_\_

**Data for Cable Determination**

- Power \_\_\_\_\_ [kW]      Number of Cores \_\_\_\_\_
- Voltage \_\_\_\_\_ [V]      Number of Screened Cores \_\_\_\_\_
- Amperage \_\_\_\_\_ [A]      Cores for Bus System:
- PE  yes  no      Type \_\_\_\_\_
- N  yes  no      Number of pairs \_\_\_\_\_

**Operating Conditions**

- Site  indoors  outdoors  port  tropics  subtropics
- Degree of pollution  little  medium  strong
- Aggressive media  yes  no  
Type \_\_\_\_\_  
Concentration \_\_\_\_\_
- Ambient Temperature min \_\_\_\_\_ [°C] max \_\_\_\_\_ [°C]
- Humidity \_\_\_\_\_ [%]
- Protection type IP \_\_\_\_\_

**Design**

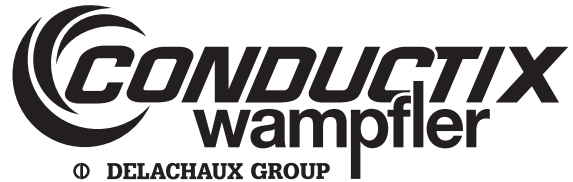
- Reel Characteristics:  
 spiral  3-2-3  bulk wrapped  levelwind
- Direction of unwinding:  
 normal left  abnormal / right
- Drive:  
 Normmotor with Magnetic Clutch  
 Torque Motor  
 VWF Drive (more information: see page 3)

**Accessories**

- Tension Relief:  
 Cable mesh grip  
 Cable clamp  
 Damping device
- Cable Guide:  
 with overtension/slack sensors  
 without overtension/slack sensors  
 Cable Guide (90° or 60°)  
 Roller Guide  
 Cable Guide Roller  
 Cable Feed Point
- Control Unit for VWF-Drives:  
 more information: see page 3

# Questionnaire

## Motorized Reels Control Interface Checklist



### Control

- Supplier of crane control  Siemens  ABB  GE  Others
- Project manager \_\_\_\_\_  
Phone: \_\_\_\_\_ E-Mail: \_\_\_\_\_

### Power Supply by Customer

- Power supply:  Frequency converters used as drives 3Ph+PE  
 Earthed  Isolated  
Voltage:  400 V  460 V  \_\_\_ V  
Frequency:  50 Hz  60 Hz
- Control power supply: AC 1Ph+N+PE und 24V DC  
Voltage:  230 V  110 V  \_\_\_ V  
Frequency:  50 Hz  60 Hz
- Heater power supply: AC 1Ph+N+PE  
Voltage:  230 V  110 V  \_\_\_ V  
Frequency:  50 Hz  60 Hz

### Panel Design

- Panel:  Closed panel  Open mounting plate  
Supplier:  Rittal  Others \_\_\_\_\_  
Width:  600 mm  \_\_\_ mm (see options)  
Height:  2000 mm  \_\_\_ mm (see options)  
Depth:  600 mm  \_\_\_ mm (see options)  
Locations:  Airconditioned electric room  
Nameplate:  Delivered by customer

- Panel wiring: Wire size according to: Color code according to:  
 DIN VDE / IEC  DIN VDE / IEC  
 Others (see options)  Others (see options)

- Wire identification:  Terminal number  
 None  
 Others (see options)

- Labeling of control equipment  Designation acc. to circuit diagram  
 Function text (see options)

- Braking resistor:  IP20 (indoor)  IP23 (outdoor)

- Reel brake: Voltage:  230 V AC  110 V  
Frequency:  50 Hz  60 Hz

### Standards, Norms and Interface

- Standards and norms:  
 DIN VDE/IEC  UL  Others: \_\_\_\_\_

- Documentation:  
 English  German

- Type of control:  
 Standard  Customer specific

- Interface to crane PLC:  
 Software implementation into the crane PLC  
 Profibus with I/O  Others: \_\_\_\_\_  
 Potential free contacts  230 V AC  110 V AC  24 V DC

- PLC-Type:  
 Siemens S7-300/400  ABB AC800M  GE RX3i  
 Others: \_\_\_\_\_

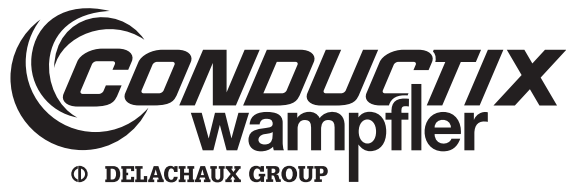
### Options According to price list

- For standard and customer specific controls available \_\_\_\_\_  
Only for customer specific controls available \_\_\_\_\_
- Customer related circuit diagram •
  - Wiring size or color code according to customers specification •
  - Wire identification according to customers specification ••
  - Function text for control equipment ••
  - Color of panel according to customers specification ••
  - Siemens panel type 8MF •
  - Filter for EMC limit acc. category 2 of EN 61800-3 ••
  - Relay interface ••
  - Transformer for AC/DC control voltage •
  - Power supply voltage > 480VAC ••
  - Control panel according to UL •
  - Warranty period 36/48 months ••
  - LOP housing stainless steel V2A ••

All options are subject to additional costs!

Motorized Reels

Program 7100



Required Documentation (hardcopies / digital)

_____	_____	_____
_____	_____	_____
_____	_____	_____
_____	_____	_____
_____	_____	_____
_____	_____	_____

Special packaging

_____	_____	_____
_____	_____	_____
_____	_____	_____
_____	_____	_____
_____	_____	_____
_____	_____	_____

Further Comments / Remarks

_____	_____	_____
_____	_____	_____
_____	_____	_____
_____	_____	_____
_____	_____	_____
_____	_____	_____

Customer Data

Company: \_\_\_\_\_ Customer-No.: \_\_\_\_\_  
FAO: \_\_\_\_\_  
Address: \_\_\_\_\_  
\_\_\_\_\_  
\_\_\_\_\_  
Phone: \_\_\_\_\_ Fax: \_\_\_\_\_  
E-Mail: \_\_\_\_\_